

AI SHANG Sports Camera

Installation and Operation Manual V3.0

I. Product Structure (Fixed Version)

1.1 Product Appearance



Figure 1.1 Product Image

1.2 Product Dimensions

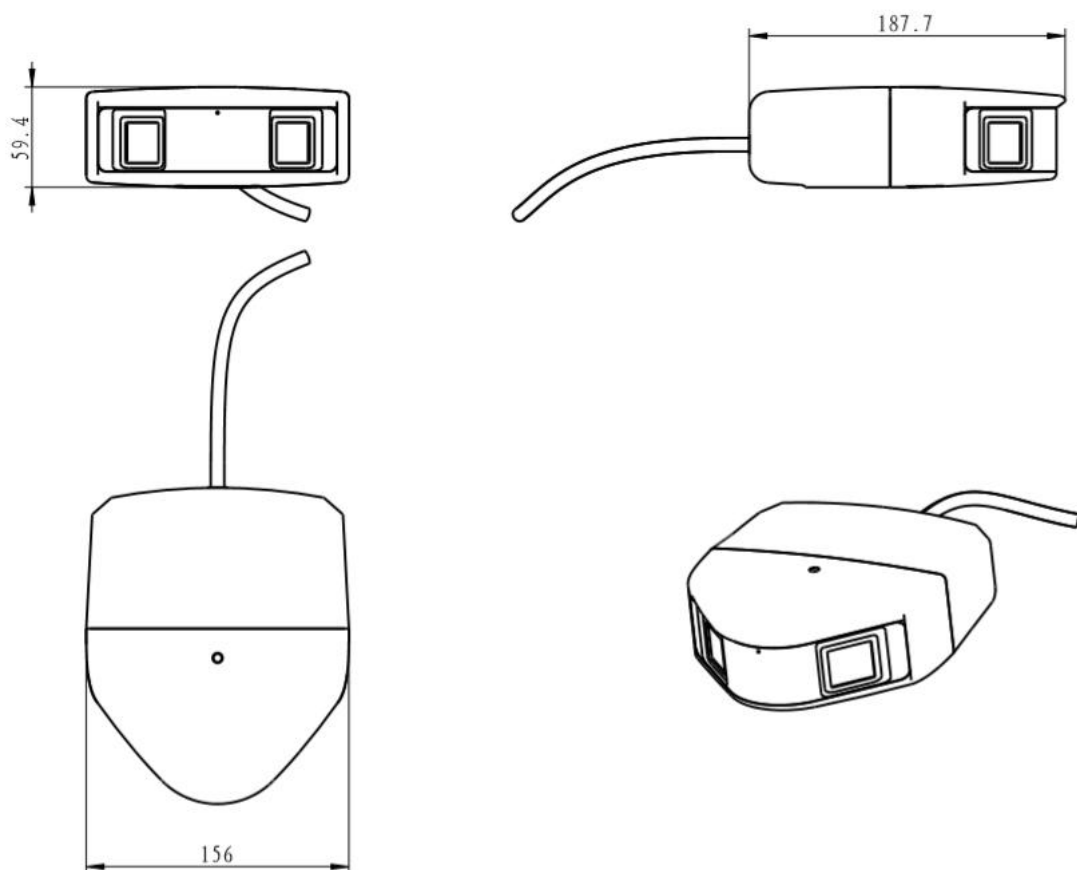
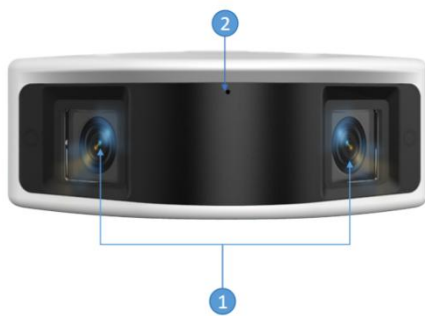
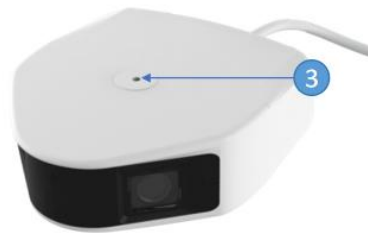


Figure 1.2 Product dimensions

1.3 Product Interface



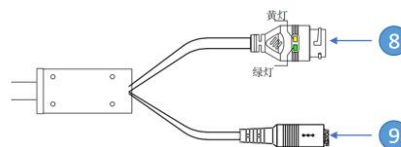
Product Front



Product Top



Product bottom



Product tail wire

Serial No.	Name	Definition
1	Camera	Dual cameras, video capture
2	Microphone	Noise-canceling omnidirectional microphone
3、4	Mounting holes	1/4" threaded holes: 1 top, 2 bottom
5	TF card slot (not supported)	TF memory card slot
6	Reset button	Press and hold for 5 seconds to reset to factory settings
7	SIM card slot (4G supported)	4G communication, nano SIM card slot
8	Network port	10/100M auto-sensing RJ45 Ethernet port, supports POE power
9	Power port	Ø5.5mm, DC12V power supply

II. Product Structure (Mobile Version)

2.1 Product Appearance



Figure 2.1 Product Appearance (Different Color Series)

2.2 Product Dimensions

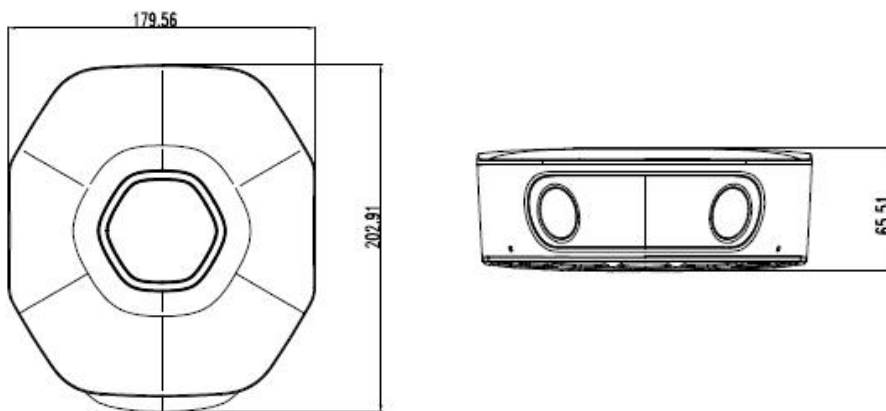


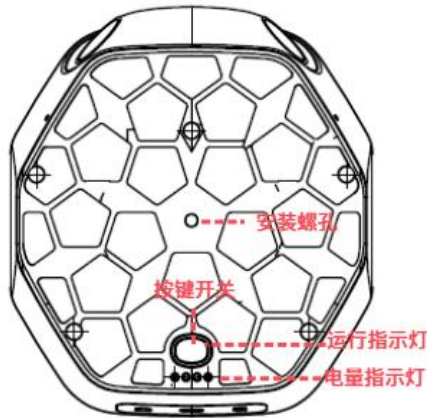
Figure 2.2 Product Dimensions

2.3 Product Interfaces



Front face structure

Back shell interface



Product bottom interface

Region	Name	Definition
Front	MIC1&MIC2	Microphone, dual channels
	CAM1&CAM2	Camera, dual channels
Back	Nano sim	SIM card slot (4G/5G models supported)
	Reset	Hardware reset, press and hold for 5 seconds to reset
	Type-C	Charging port, supports fast charging
	RJ45	Wired network port
Bottom	Push-button switch	Press and hold for 5 seconds to power on/off; short press to check battery level.
	Operating indicator light	Camera starting up: steady white light. Camera powered on: flashing green light.
	Battery indicator light	4 green lights indicate camera battery level, each representing 25% charge.
	Mounting screw holes	1/4" screw hole for mounting with 1/4" screw brackets.

II. Unboxing Inspection

After unpacking the outer box, please first inspect the camera for any obvious damage. Then, please confirm that the contents match the shipping instructions. For fixed models, please refer to Table 1-1; for

mobile models, please refer to Table 1-2; for optional features, please refer to Tables 1-3. Actual configurations may vary by specific product.

Fixed Model AI SHANG Sports Camera:

Name	Specifications	Quantity
AI SHANG Sports Camera	Unit	1
Waterproof 4-Piece Set with Ethernet Port	Set	1
Product Certificate/Warranty Card	Set	1

Table 1-1

Mobile Model AI SHANG Sports Camera:

Name	Specifications	Quantity
AI SHANG Sports Camera	Unit	1
Portable Packaging	Set	1
Power Charger	Set	1
Type-C Cable	Set	1
Super Category 5 Ethernet Cable	Set	1
Product certificate/warranty card	Set	1

Table 1-2

The optional list is as follows: Please contact the company's technical staff for a configuration list based on the on-site environment.

Part Name	Specifications	Quantity	Description
Power Adapter	Unit	1	Optional: DC12V or POE adapter
Tripod	Unit	1	Optional: Mobile installation
Wall mount	Unit	1	Optional: Fixed installation

Table 1-3

II. Camera Installation

The camera's installation location, site calibration, and network environment will directly impact image quality and live streaming performance. Please select a suitable installation location, properly complete site calibration, and provide a stable network environment for the best experience.

4.1 Installation Location

Installation location requirements: Refer to Figure 4-1 for the basketball version of the AI SHANG Sports Camera; Figure 4-2 for the football version of the AI SHANG Sports Camera.

AI尚运动相机-篮球场安装参考图



Figure 4-1 Basketball Court Installation Location Reference

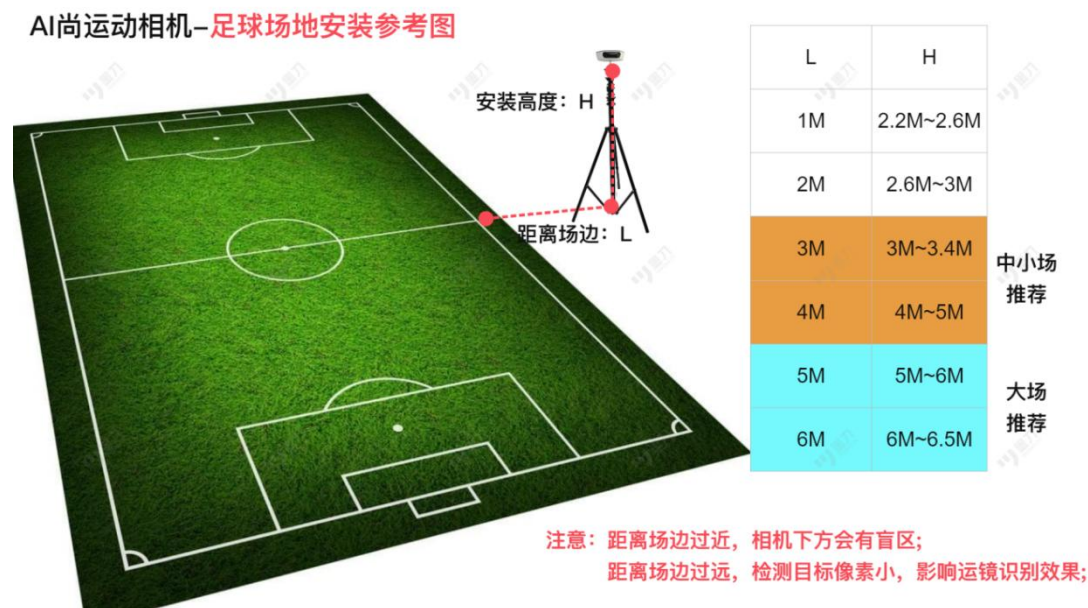


Figure 4-2 Soccer Field Installation Location Reference

4.2 Network Environment

The AI SHANG sports camera captures, processes, and transmits ultra-high-definition video data at tens of millions of pixels. This requires sufficient bandwidth (25Mb/s) to support real-time data transmission. Therefore, a stable Wi-Fi or wired network with 100Mb/s (Gb/s recommended for multiple cameras) and public network access is required between the AI SHANG Sports Camera installation point and the back-end network.

4.3 Camera Installation and Startup

AI SHANG Sports Camera comes in fixed and mobile versions, supporting wall mounting, mobile tripod mounting, ceiling mounting installation, etc. The camera installation process is as follows:

4.3.1 AI SHANG Sports Camera Fixed Version

- 1) Preliminary Preparation: AI SHANG Sports Camera, wall mount bracket, power adapter or POE switch, and network cable.
- 2) Read Section 4.1 Installation Location to select an appropriate mounting point based on the site environment.
- 3) Use tools to install the wall mount bracket (refer to Figure 4-3 Fixed Wall Mount Installation).
- 4) Mount the camera on the bracket, facing the court, and adjust the horizontal and vertical angles, tilting the lens downward approximately 15 degrees.
- 5) Connect the camera power supply and insert the network cable. Observe whether the RJ45 port indicator light illuminates normally.
- 6) Installation and startup complete..



Figure 4-3 Fixed Wall Mount Installation

4.3.2 AI SHANG Sports Camera Mobile Version

- 1) Preliminary Preparation: AI SHANG Sports Camera, tripod, network cable (for wireless connection, prepare Wi-Fi or SIM card).
- 2) Read Section 4.1 Installation Location and select an appropriate mounting point based on the site environment.
- 3) Securely screw the camera's bottom mounting screw into the tripod; (Refer to Figure 4-4: Mobile Tripod Installation).
- 4) Press and hold the power button for 5 seconds to start the camera. The ring indicator light changes from steady white to flashing green, indicating successful startup.
- 5) For wired connection, insert the Ethernet cable and verify the RJ45 port indicator light illuminates normally.
- 6) Raise the tripod to an appropriate height, facing the court, and adjust the horizontal angle (the camera is mounted parallel and requires no pitch angle adjustment).
- 7) Installation and startup complete.



4.4 Screen Adjustment

After installing the camera, use the mobile app “AI SHANG Sports” or the computer client “AI Sports Live Assistant” software to add and bind the camera. Enter the field calibration operation to display the panoramic view of the venue. Observe whether the field image in the panoramic image meets the following requirements:

- 1) Are the four corners of the court and the left/right baskets/goals clearly visible in the frame?
- 2) Are the upper left and upper right corners of the court symmetrical and aligned on the same horizontal line?

- 3) Are the lower left and lower right corners of the court symmetrical and aligned on the same horizontal line?
- 4) Does the vertical center-line of the court align as closely as possible with the vertical reference line?
- 5) Is there sufficient space between the left and right basketball hoops and the top of the frame (to prevent balls from appearing to fly off-screen)?

For these requirements, refer to Figure 4-5 for basketball courts and Figure 4-6 for soccer fields.



Figure 4-5 Aligning the Adjusted Panoramic View of the Basketball Court with the Marked Lines

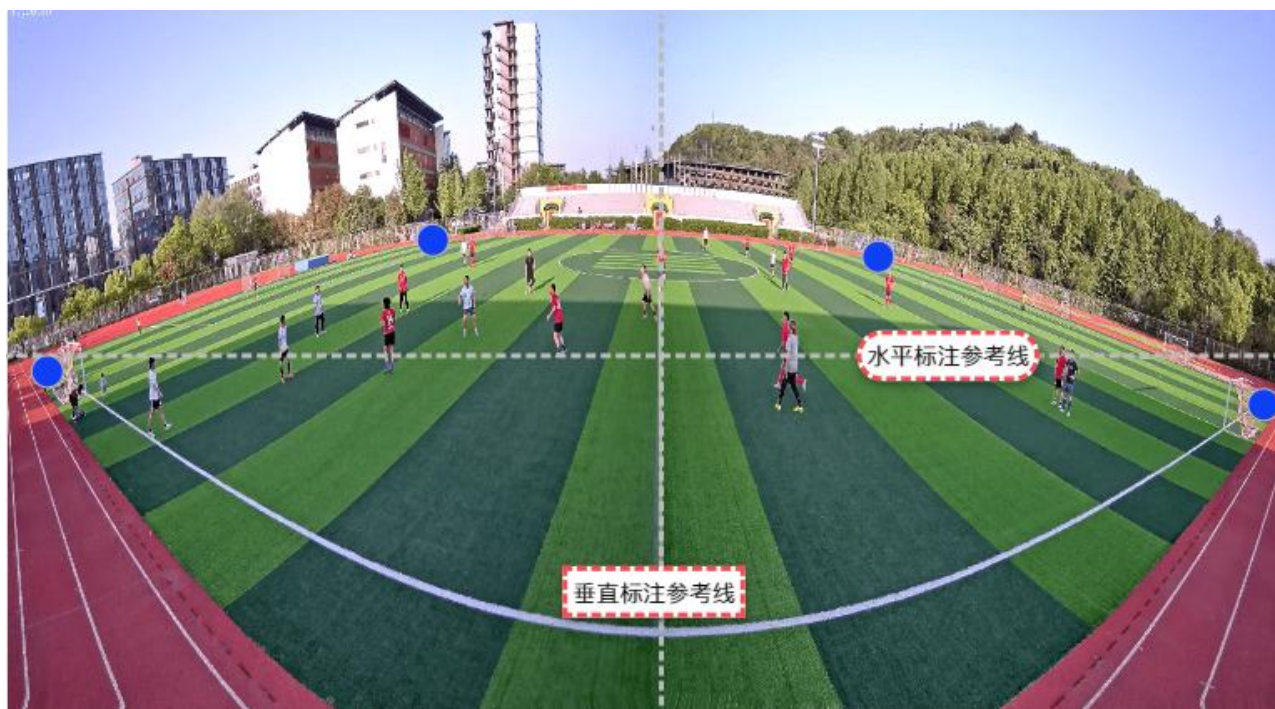


Figure 4-6: Aligning the Adjusted Panoramic View of the Soccer Field with the Annotation Lines

III. Software Configuration Operations

After installing and starting the AI SHANG Sports Camera, you can use either the mobile app “AI SHANG Sports” or the computer client “AI Sports Live Assistant” to perform additional functional operations. Software feature overview:

- 1) The “AI SHANG Sports” app is the mobile application for the AI SHANG Sports Camera. It enables camera addition, camera network configuration, video preview, site calibration, RTMP streaming, recording, competition scoring, playback and download of recorded videos, and playback and download of highlight videos.
- 2) The “AI Sports Live Assistant” is the desktop client software for the “AI SHANG Sports Camera.” It supports camera management, RTMP

live streaming, local camera live streaming, recording, playback and download of recorded videos, competition scoring, event management, and data statistics.

For detailed software operation instructions, please refer to the "AI SHANG Sports App User Manual" and "AI Sports Live Streaming Assistant User Manual."

For video instructions, please follow Raying Technology's Video Account:



Experience the AI SHANG Sports Camera app in action—follow the AI SHANG Sports TikTok account:

